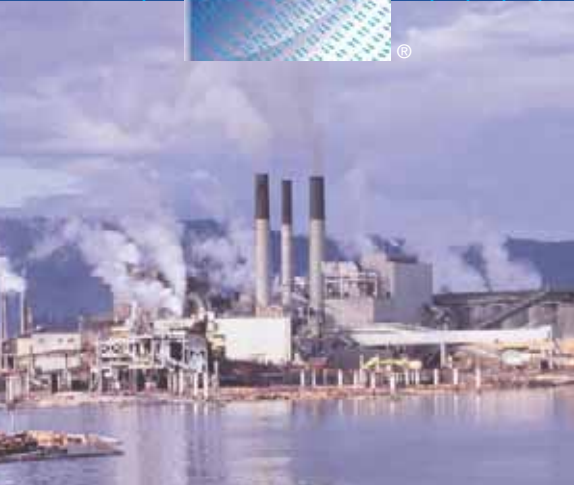
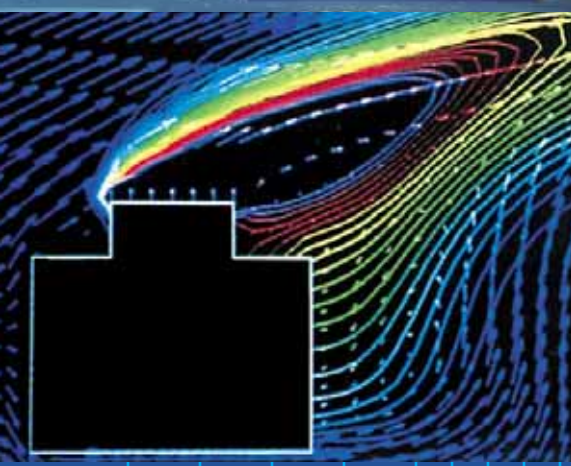
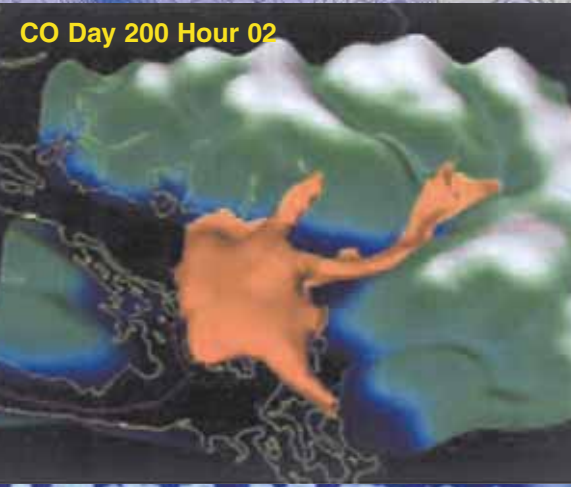
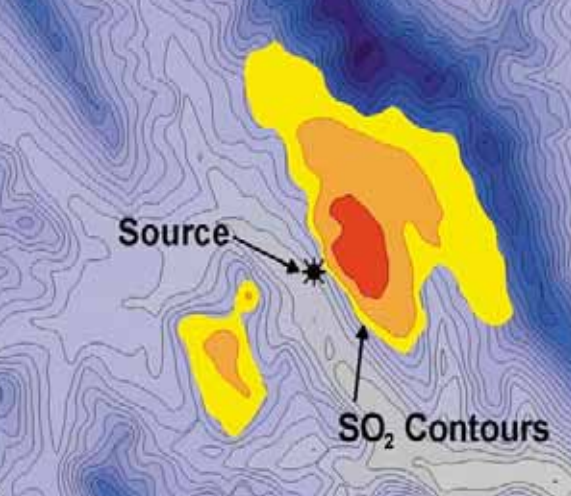


RWDI air quality services include:

- **REGULATORY MODELLING** - for environmental applications, approvals and impact assessments required for new and expanded industrial facilities
- **REGIONAL AIRSHED MODELLING** - evaluate urban smog, ground-level ozone, fine particles and deposition for urban and rural areas
- **ACCIDENTAL RELEASE MODELLING** - assess accidental releases from multi-phase, heavier-than-air, neutrally-buoyant, transient and steady-state releases
- **SOURCE AND EMISSION INVENTORIES** - identify and characterize point, line, area and mobile emission sources
- **METEOROLOGICAL ANALYSIS** - review airport and site-specific meteorological data for dispersion characterization
- **CLIMATE ASSESSMENTS** - assess climate for project design
- **PHYSICAL MODELLING** - resolve complex airflow problems through wind tunnel testing
- **TECHNOLOGY EVALUATION** - assess stack design, incinerator temperature and emission control optimization
- **MONITORING SUPPORT** - design ambient air quality monitoring networks and meteorological monitoring programs
- **SPECIALIZED FIELD PROGRAMS** - provide ambient monitoring, flux measurements, meteorology monitoring and time-lapse photography
- **PUBLIC INVOLVEMENT AND EXPERT TESTIMONY** - provide support for public involvement processes and expert testimony at regulatory hearings





RWDI resources include:

- **INDUSTRIAL FACILITY DISPERSION MODELS** - regulatory models include SCREEN3, ISCST3, RTDM, AERMOD, ISC-PRIME and CALPUFF
- **ACCIDENTAL RELEASE DISPERSION MODELS** - focus on transient/steady-state releases and buoyant/heavier-than-air releases; these include SLAB, HGSYSTEMS and GASCON2
- **REGIONAL SCALE DISPERSION MODELLING TOOLS** - include MM5, CALMET, CALPUFF, CALGRID and Models-3
- **WIND TUNNELS** - scale model testing to resolve complex flow regimes in the vicinity of building complexes and elevated terrain features
- **COMPUTATIONAL FLUID DYNAMICS (CFD) MODELS** - predict complicated flows and particle trajectories in localized areas
- **COMPUTER RESOURCES** - state-of-the-art workstations, 2-D and 3-D presentation graphics and animation software

Why RWDI?

- 200+ person firm with international reputation for atmospheric sciences and wind engineering
- Air quality assessment staff with extensive expertise located in Calgary, Alberta and Guelph, Ontario
- Expertise in the oil and gas, oil sands, power plant, cogeneration, forest products, mining, manufacturing, waste disposal, transportation, chemical, and urban development sectors
- Fast turnaround on projects
- Service for HAZARD/RISK, ACOUSTICS/NOISE/VIBRATION, INDUSTRIAL PROCESSES, VENTILATION, WIND, SNOW and SUN issues also provided



Guelph
(519) 823-1311

RWDI AIR Inc.
Calgary
(403) 232-6771
www.rwdi.com

Vancouver
(604) 730-5688